

SUGAR MILL DRIVES





BREVINI POWER TRANSMISSION



Our innovative and global Company established in 1960 focuses on the engineering production and distribution of mechanical transmissions: Brevini offers a complete range of planetary gear units helical gearboxes and winches. Brevini Power Transmission is a growing organization with a consolidated turnover of more than 320 million Euros and with 150,000 gearboxes produced per year. Our direct network of 26 Subsidiaries and 4 Service Centers provide excellent service and after sales support.

BREVINI
HEAVY DUTY
POWERFUL
SOLUTIONS



Brevini is a planetary partner who understands your applications, specifies the right equipment and adds value at every step. Brevini has kept materials moving through heavy duty operations for more than fifty years and is with you every step of the way. From purchase and installation to testing, monitoring, repair and overhauls, Brevini provides outstanding lead times and customer service. Count on our product quality, on-the-spot field service and industry-leading technical support to prevent costly maintenance, repairs and shutdowns, maximizing your return over the product's total lifecycle.



With sales and service operations worldwide (26 subsidiary companies) and a vast network of distributors, we deliver exactly what you need, when you need it.

- Mining & mineral processing
- Bulk materials handling and storage
- Tunnel boring machines
- Steel & metals processing
- Cement plants
- Sugar mills and plants

INDEX

Product Dimensions are indicative.

Brevini has the right to change catalogue data, dimensions and performance, making corrections at any time without prior notice.

Brevini Planetary Gearbox solutions for Sugar Industry:

1. Single Drive

2. Multiple Drive

2.1 Independent Drive

2.2 Assist Drive

3. Crystallizer

4. Accessories

4.1 Forced Cooling System

4.2 Output Configuration: FR - FS

4.3 Foot Bracket

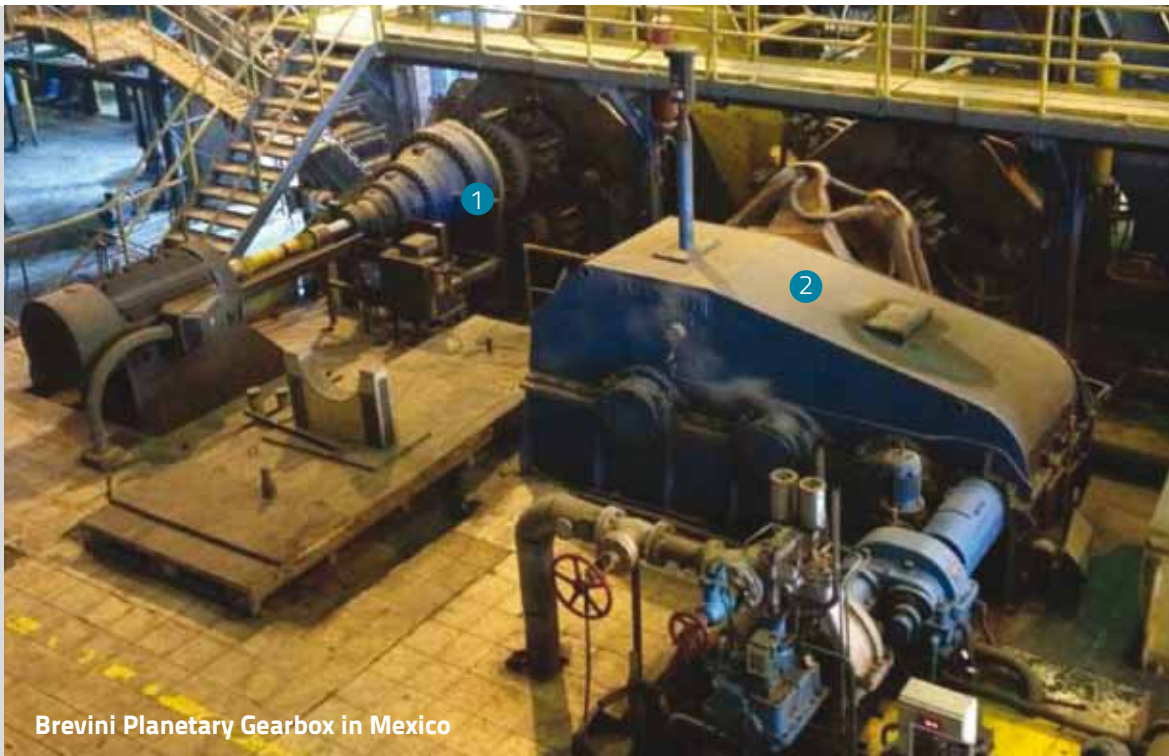
4.4 Torque Arm

4.5 Technical Form for collecting data



- 1 - Brevini Modular Planetary Solution:**
 - Compactness: Foot Bracket or Shaft Mounted
 - High Mechanical Efficiency
 - Remarkable Power Saving
 - Installation Cost Reduction: Foundation not required
 - Maintenance Cost Saving
 - Condition Monitoring Set Up

- 2 - Conventional helical gearbox driven by steam turbine**



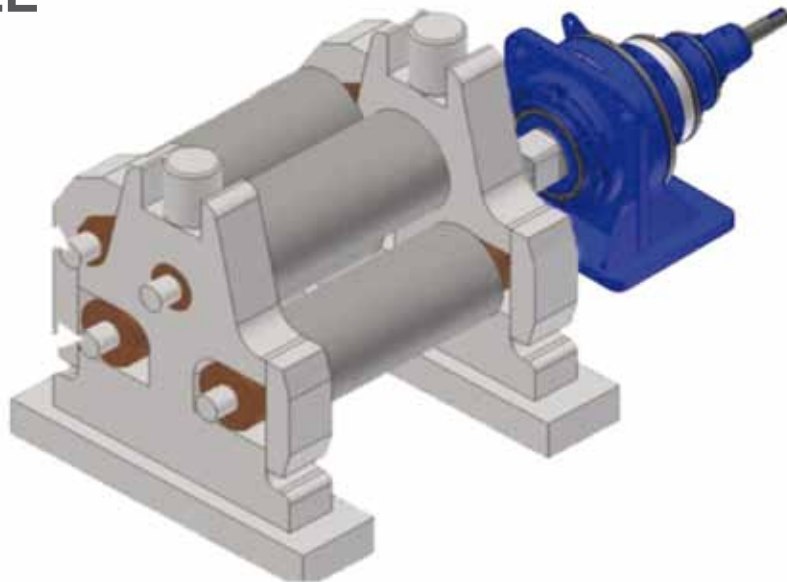
Brevini Planetary Gearbox in Mexico

DRIVING SUGAR MILLS with

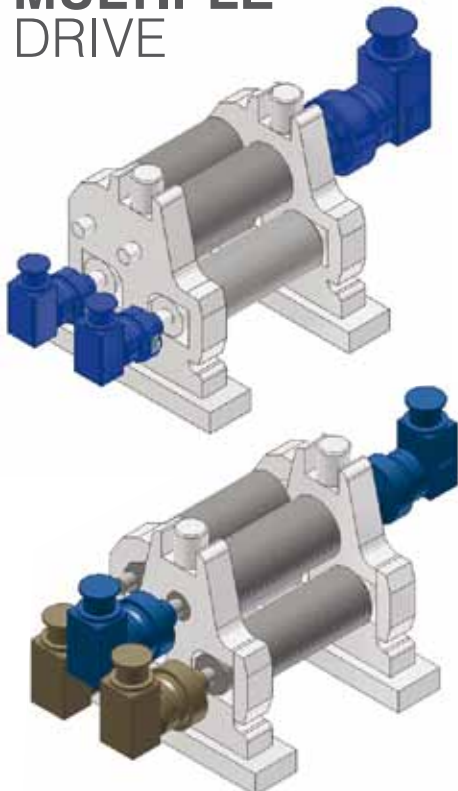


HEAVY DUTY TECHNOLOGIES

SINGLE DRIVE



MULTIPLE DRIVE



Multiple Drive concept is becoming more and more common.

Main advantages are:

To split torque/power for each Roller, according with the load of production

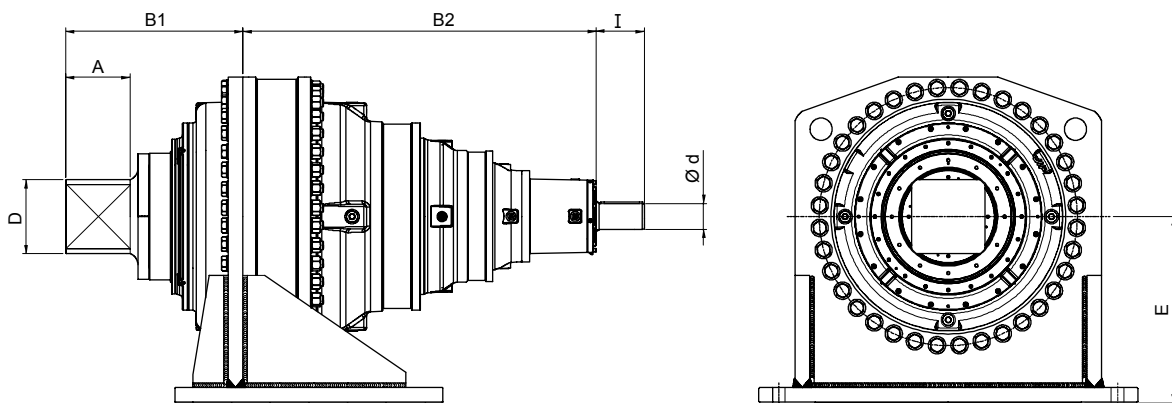
Less power demand

To have same size of Planetary Gearbox for each Mill

Less spare part components

Increase the **EFFICIENCY**
of the Transmission System
and Increase the
PRODUCTION OUTPUT

SINGLE DRIVE



Technical data (3 stages)

GEARBOX MODEL	B1	B2	A	D	I	Ød	E	T2 ref. Nm
■ S5000	608	1264	240	280	210	110	730	740.000
■ S7500	689	1456	240	300	210	110	800	1.050.000
■ S10000	782	1689	280	340	310	140	920	1.500.000
■ S15000	820	1937	330	360	310	160	980	2.170.000
■ S20000	1100	1728	400	450	(1)	(1)	1150	3.150.000

- Use the torque values for the calculation of Service Factor: SF minimum = 2
- Selections based only to SF check will not be accepted
- Ask Brevini the Gearing and Bearing life time calculation

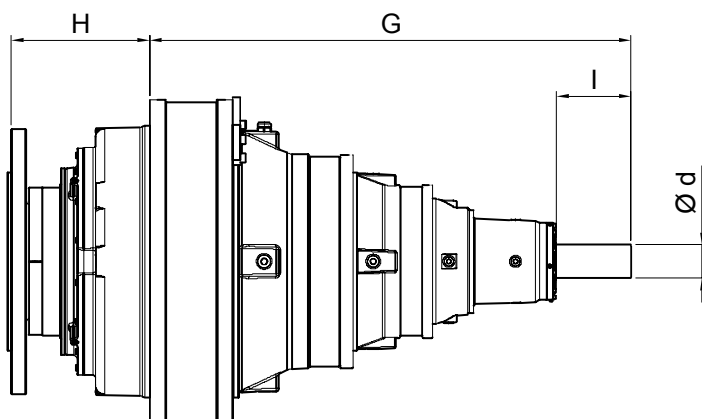
(1) available on request



Brevini Planetary Gearbox in Brazil

MULTIPLE DRIVE

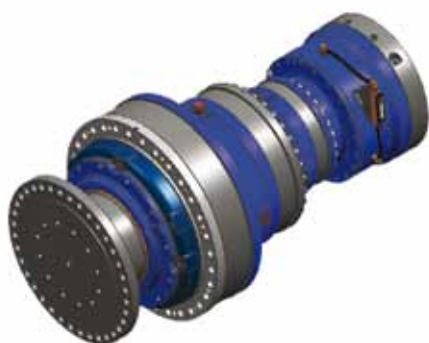
INDEPENDENT/ASSIST DRIVES



Technical data (3 stages)

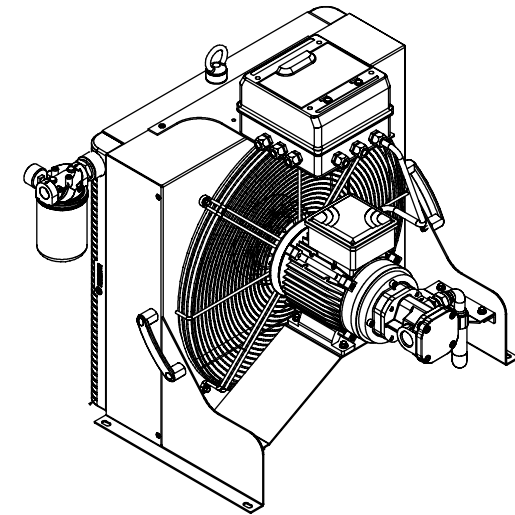
GEARBOX MODEL	H	G	I	Ød	T2 ref. Nm
■ S1800	304	1114	130	80	275.000
■ S2500	327	1204	130	80	380.000
■ S3500	370	1339	210	100	540.000
■ S5000	435	1474	210	110	740.000
■ S7500	540	1666	210	110	1.050.000

- Use the torque values for the calculation of Service Factor: SF minimum = 2
- Selections based only to SF check will not be accepted
- Ask Brevini the Gearing and Bearing life time calculation

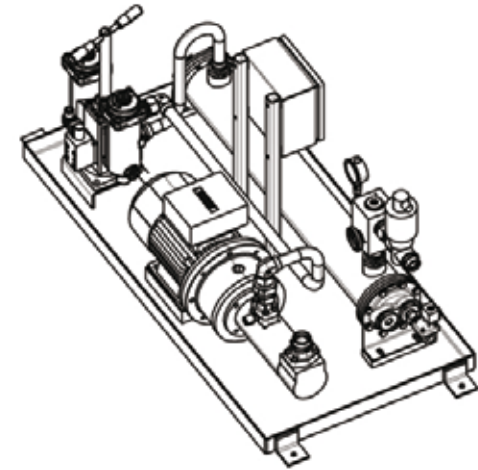


Brevini Planetary Gearbox in Brazil

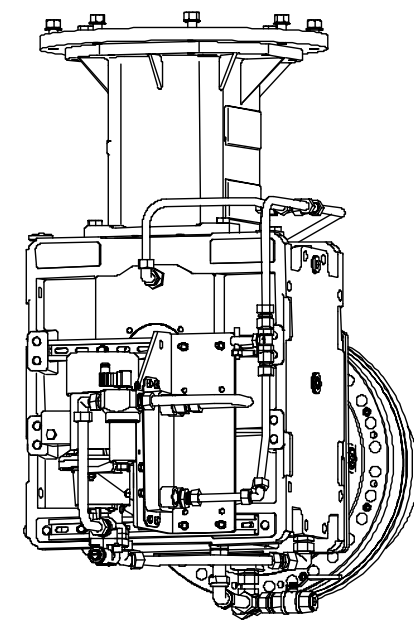
FORCED COOLING SYSTEMS



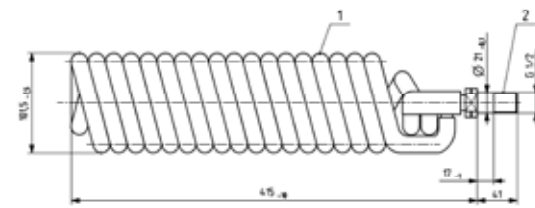
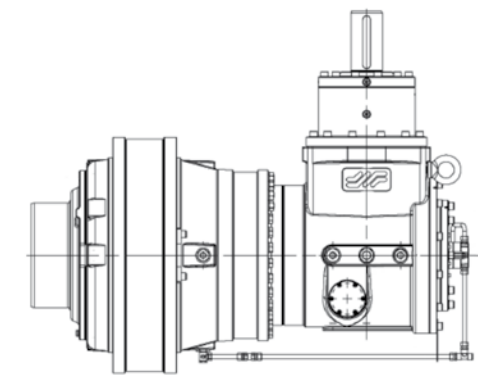
Air-Oil Forced Cooling System



Water-Oil Forced Cooling System

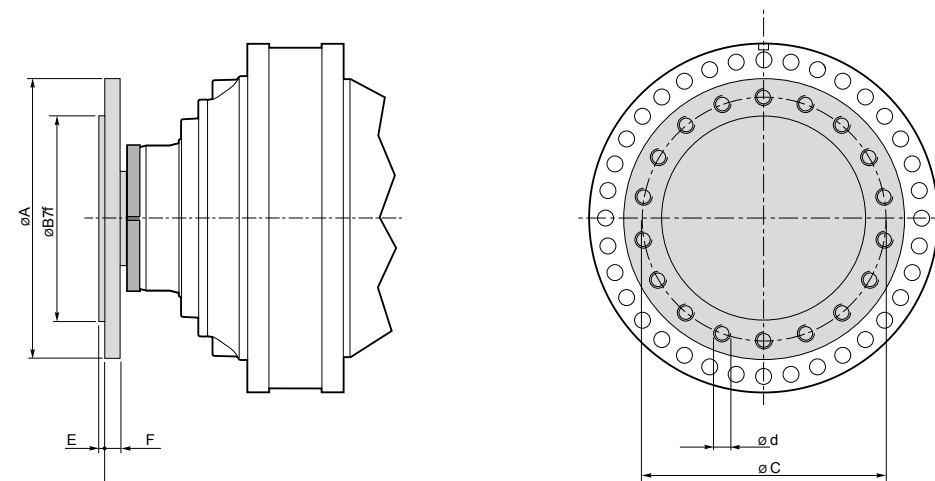


Water-Oil Forced Cooling System Directly mounted on the gearbox



Internal Water-Oil Forced Cooling System

OUTPUT CONFIGURATION FR



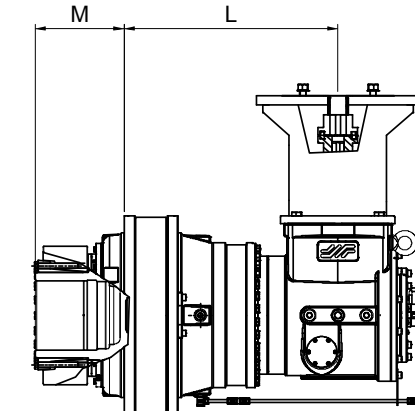
Technical data

GEARBOX MODEL	A	B(f7)	E	F	C	ϕd
■ S300	360	220	10	30	300	M30
■ S400	360	220	10	30	300	M30
■ S600	400	260	10	30	340	M30
■ S850	450	310	10	35	395	M30
■ S1200	510	375	10	35	450	M30
■ S1800	585	445	10	40	530	M30
■ S2500	655	480	10	40	580	M36
■ S3500	730	545	10	50	650	M36
■ S5000	800	620	10	50	730	M36
■ S7500	960	650	10	60	(1)	(1)

(1) = Largest sizes available on request

Brevini "FR" gearbox output is a configuration with Splined Hollow Shaft and Rotating Driving Flange (supplied by Brevini) to mount the gearbox directly on the roll shaft counter-flange, assuring a perfect alignment and full transmissible driving torque.

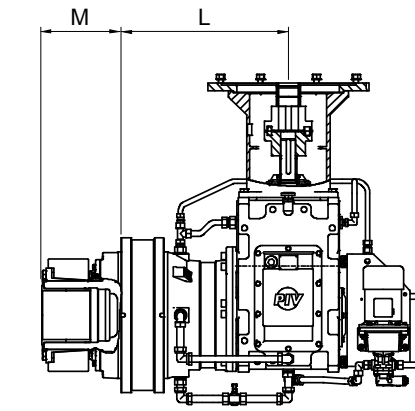
MULTIPLE DRIVE



Technical data

GEARBOX MODEL	M	L	T2 ref. Nm
■ S1800	322	776	275.000
■ S2500	358	822	380.000
■ S3500	368	935	540.000
■ S5000	438	1017	740.000
■ S7500	530	1051.5	1.050.000

INDEPENDENT/ASSIST DRIVES



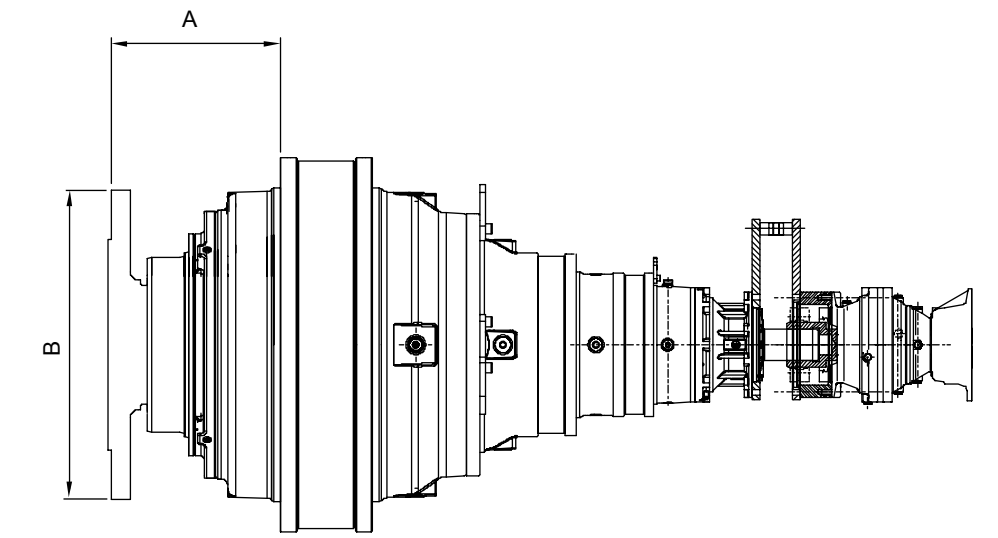
GEARBOX MODEL	M	L
■ SL2PLB18020	322	729.5
■ SL2PLB25025	358	806
■ SL2PLB35031	368	937
■ SL2PLB50031	438	1022
■ SL2PLB75031	530	1273

- Use the torque values for the calculation of Service Factor: SF minimum = 2
- Selections based only to SF check will not be accepted
- Ask Brevini the Gearing and Bearing life time calculation



Brevini Planetary Gearbox in India

CRYSTALLIZERS

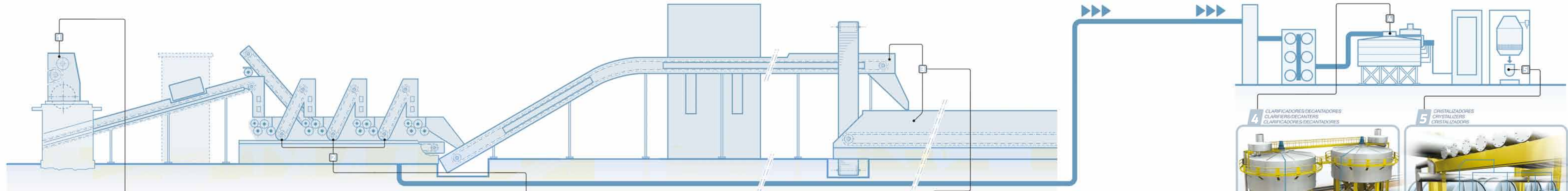


Technical data

GEARBOX MODEL	A	B	GEARBOX MODEL	A	B
■ S300	187	360	■ S1800	304	585
■ S400	210	360	■ S2500	327	655
■ S600	230	400	■ S3500	370	730
■ S850	270	450	■ S5000	435	800
■ S1200	290	510	■ S7500	540	960



Brevini Planetary Gearbox in Mozambique



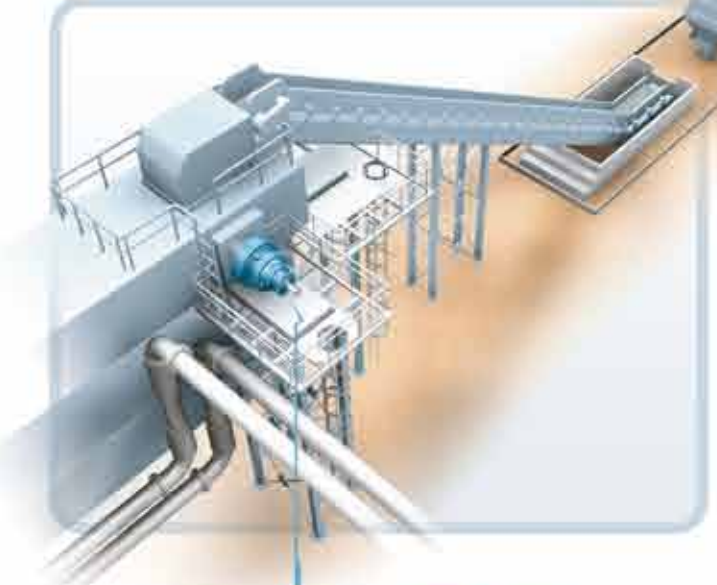
1 ESTERA DE CANA
MAIN CANE CARREER
CONDUCTOR DE CANA



2 MOENDAS DE CANA
CANE MILLS
MOLINOS DE CANA



3 ESTERA DE DISTRIBUÇÃO DE BAGACO
BAGASSE INFEED CONVEYOR
CONDUCTOR PARA DISTRIBUÇÃO DE BAGAZO



4 CLARIFICADORES/DECANTADORES
CLARIFIERS/DECANTERS
CLARIFICADORES/DECANTADORES



5 CRISTALIZADORES
CRYSTALIZERS
CRISTALIZADORES

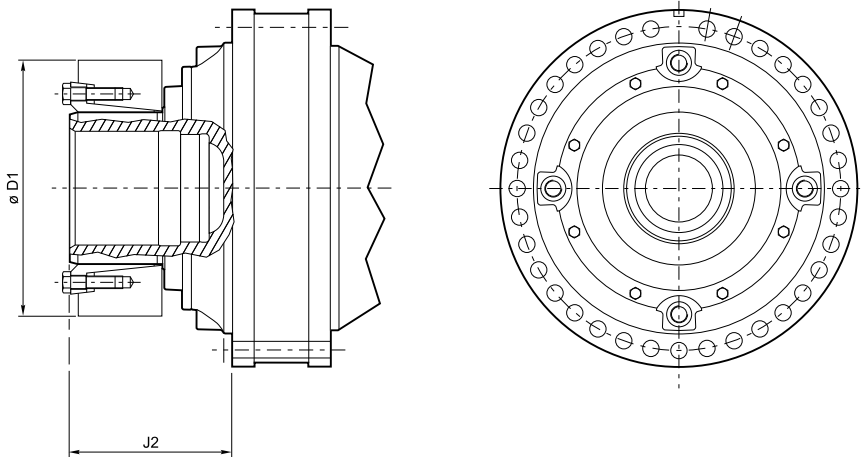


6 DIFUSOR
DIFFUSER
DIFUSOR



OUTPUT CONFIGURATION

FS

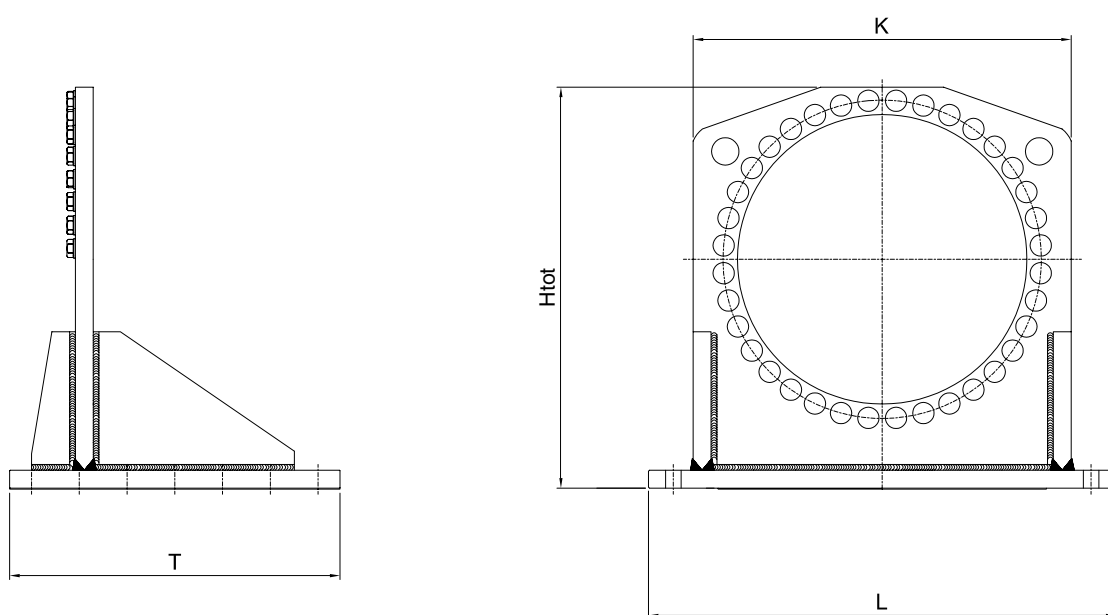


Technical data

GEARBOX MODEL	J2	D1
■ S300	178	320
■ S400	208	320
■ S600	235	370
■ S850	257	405
■ S1200	315	460
■ S1800	322	485
■ S2500	358	570
■ S3500	368	590
■ S5000	438	680
■ S7500	530	850
■ S10000	630	940
■ S15000	710	970
■ S20000	800	1230

Brevini "FS" gearbox output is a configuration with Hollow Shaft and Shrink Disc (supplied by Brevini) to mount the gearbox directly on the roll shaft, assuring an axial space saving and full transmissible driving torque.

FOOT BRACKET

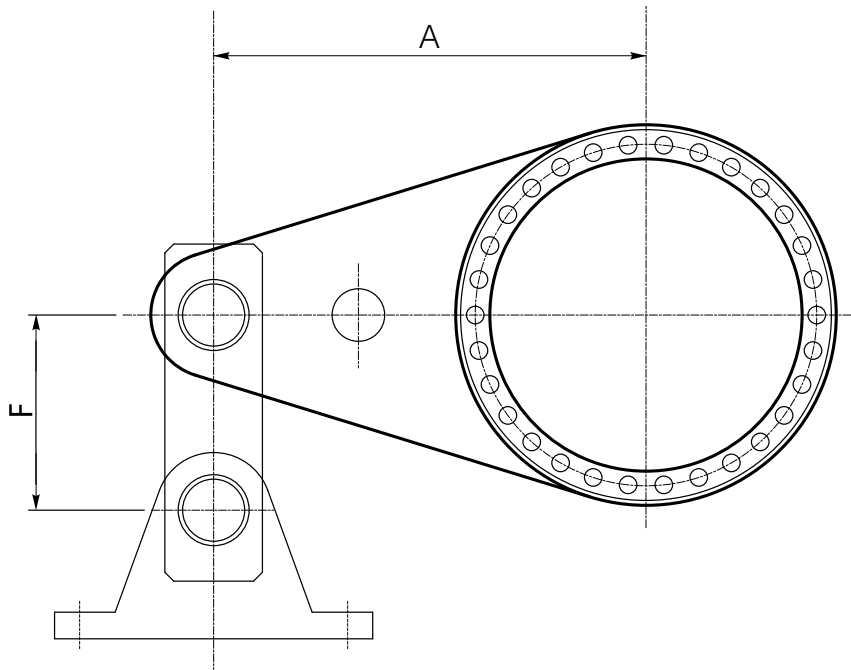


Technical data

GEARBOX MODEL	T	Htot	L	K
■ S5000	910	1220	1540	1210
■ S7500	1000	1380	1700	1320
■ S10000	1100	1593	1900	1500
■ S15000	1300	1730	2200	1650
■ S20000	1660	2015	2350	1900



TORQUE ARM



Technical data

GEARBOX MODEL	A	F
■ S300	600	150
■ S400	700	160
■ S600	800	180
■ S850	1000	200
■ S1200	1000	230
■ S1800	1200	250
■ S2500	1400	300
■ S3500	1600	350
■ S5000	2000	380
■ S7500	(1)	(1)
■ S10000	(1)	(1)



(1) Torque Arm for Largest Sizes available on request

Send your email to: heavyduty@brevini.com



DATA FORM

Date _____

COMPANY _____

Address _____

Phone	email	fax
-------	-------	-----

Description of the Application	
---------------------------------------	--

New Application			Replace an Existing Solution		
Selected Power needed	KW	Hp	Actual Power installed	KW	Hp
Torque	Nm	FT-Lbs	Torque	Nm	FT-Lbs
Output speed	rpm		Output speed	rpm	
Size of motor	Speed Installed Power Hz Efficiency NEMA IEC				

NOTE/Drawing/Sketch

MILL
DRIVES
& ASSIST
DRIVES



Brazil



India



Mexico



Mexico

CANE CARRIERS



CRYSTALLIZERS CLARIFIERS



Australia



Thailand



South Africa



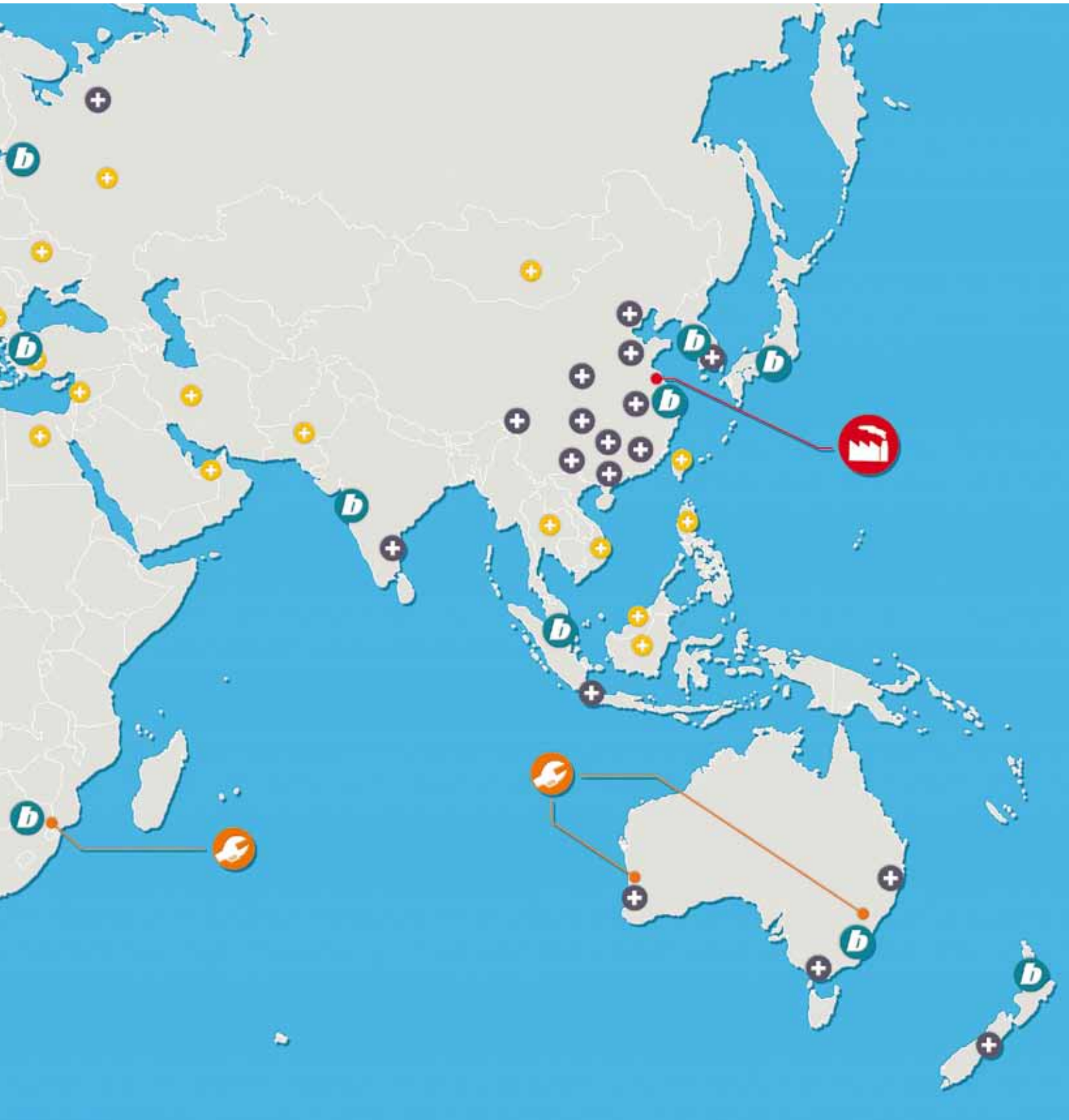
India

OUR GLOBAL
SUPPLY CHAIN
**ALWAYS CLOSE
TO THE
CUSTOMER**



Over **5000**
active clients
worldwide

Brevini Power Transmission's internationalization process is the key to the development of branches and production plants that consolidate its direct presence in 30 countries.



- | | | | |
|---|------------------------------|---|------------------------|
|  | Manufacturing Plant |  | Sales Regional Office |
|  | Sales & Assembly Subsidiary |  | Authorized distributor |
|  | Engineering & Service Centre | | |

